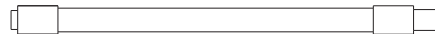
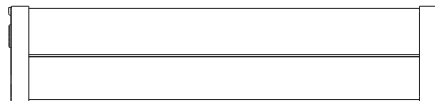




User Manual

Newdirectiontackle.co.uk



ND TACKLE

Email: Info@NewDirectionTackle.co.uk



Thank you for buying your Bivvy Light Pro

Outstanding performance and reliability have made Bivvy Light Pro amongst the most popular in the world. Designed by leading anglers in conjunction with engineers and technicians, Make the Bivvy Light Pro your guiding light in the dark.

Please take the time to read and understand this manual. Your Bivvy Light Pro will deliver years of trouble-free usage when used and maintained correctly.



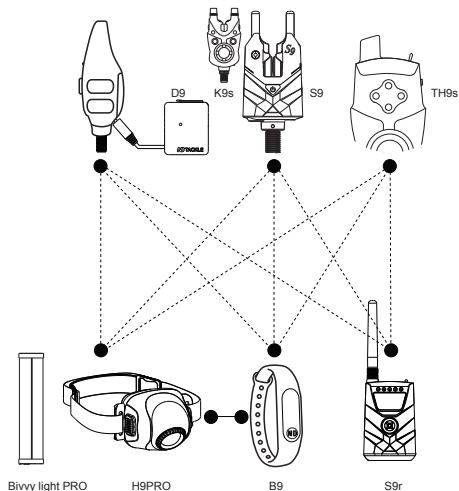
Bivvy Light Pro

CATALOGUE

- 1 What you get with Your Bivvy Light Pro
- 2 Specifications
- 3 Features
- 4 Overview
- 5 Register your ND Alarms(K9s)
- 6 Using your Bivvy Light Pro
- 7 Support

ND TACKLE

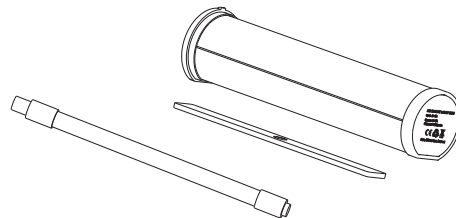
ND Tackle's policy is one of continuous improvement and we reserve the right to change product specifications without prior notice. Illustrations are for guidance purposes only.



1 | What you get with Your Bivvy Light Pro

Your Bivvy Light Pro contains the following items as standard:

- | | |
|-----------------------------|------|
| 1) Bivvy Light Pro | 1pc |
| 2) Adaptor Plate for Bivvy | 1pc |
| 3) Gooseneck for bank stick | 1 pc |
| 4) User manual | 1pc |
| 5) Free APP | 1pc |
| 6) USB Cable | 1pc |



FISHING THE SMART WAY

2 | Specifications

Product Model: Bivvy Light Pro

Dimensions	32mm*18mm
Weight	230g(Approx)
Color	Black
Luminous Flux	MAX=200lm ±10%
Color Adjustable	16 Million Colors
Brightness	0%-100%
Dimmable	Yes (App Dimming)
LEDs Power	2W-White&2W-Red&2W-Green&2W-Blue
Input	5V 2A
Output	5V 2A
Batteries	2pcs 18650 Batteries, 5200mAh
Communication Mode:	BLUETOOTH
Platform Supported:	Android5 and above system IOS8.0 and above system

3 | Features

A different colour for every night

16 million colors, 365 different nights.

You can fully adjust the color & brightness with an app on your smart phone.

Full-Featured APP

The Bivvy Light Pro comes with four lighting modes for different needs, Reading Mode, Flow Mode, Custom Mode and SOS Mode. Further, you can set Colors and brightness of light via ND Light APP



APPLE STORE



Google Play

Flicker-free, more comfortable

Flicker is harmful to your eyesight, so we use color-mixing technology to reduce it, at any color & any light intensity.

Long Playtime

Pro Bright white: 9-10 hours, Dim white: 100 hours, Colorful Mode: 9-10 hours

Link with your ND Bite Alarms

ND light will awaken when it receives the bite signal from the Alarms.

Super-High Capacity

5200mAh Lithium battery recharges in just 3 hours with 2A adapter (not included) and included Micro USB cable. It can charge iPhone 6/6s once.

Maximum output/input: 5V/2A.

Ip65-Waterproof

An IP65 rating guarantees your light will work fine in the rain.

The body, battery compartment are individually sealed and those displaying the water tested sticker have been stringently tested before leaving the factory.

MORE FREE ACCESSORIES

You do not have to pay extra cost for accessories.

1* Deluxe Bivvy Light Pro bag

1* Adsorption Plate for Bivvy

1* Gooseneck for bank stick

1* USB Cable

1* Free APP

4

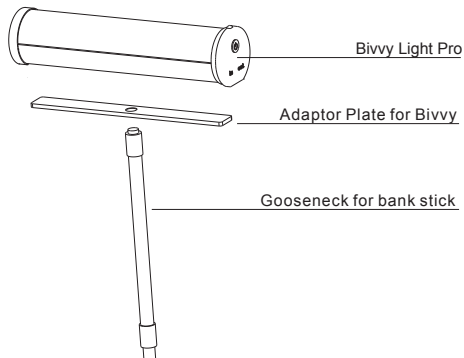
Overview

Power on/off & Mode Button

Power IN

LOW POWER INDICATOR

Power OUT



5

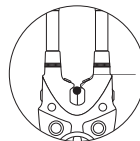
Register Mode

Register your your bivvy light pro with a bite alarm (K9s, S9)

•Double click on the button on the bivvy light. The colours will loop and flash.



•One click to choose a colour channel (red=alarm1, green=alarm2, blue=alarm3,yellow=alarm4, white=alarm 5,purple=th9s, super white=smart band)



•Once you have found your colour channel, please turn the roller wheel on the bite alarm

•The light will shortly flash if the process was sucessfull

Note: You can register only one bite alarm at one colour. So you must register each bite alarm on a different colour.

Register your your bivvy light pro with Smart Band:

- Double click on the button on the bivvy light. The colours will loop and flash



- One click to switch between the colour channels. You must choose super white channel

- Once you have found the super white channel, please press the button on the smart band



- The light will shortly flash if the process was successful
- Note: You must register the Smart Band on the super white channel

Register your your bivvy light pro with TH9s:

- Double click on the button on the bivvy light. The colours will loop and flash



- One click to switch between the colour channels
You must choose the purple channel

- Once you have found the purple channel, please press the button on the TH9s



- The light will shortly flash if the process was successful
- Note: You must register the TH9s on the purple channel

6 | Use your Bivvy Light Pro

A) Charging Your Bivvy Light Pro

You can use the USB(Micro B) with Smart phone charger to charging ND Light



Red Flash: Low Power
Green Flash: Charging
Green Light Up: Full Charge

B) Power On your Bivvy Light Pro

Long press the Power On/Off Button
(Short press for Mode changing)

C) Download the APP

Download the APP from Apple Store or Google Play



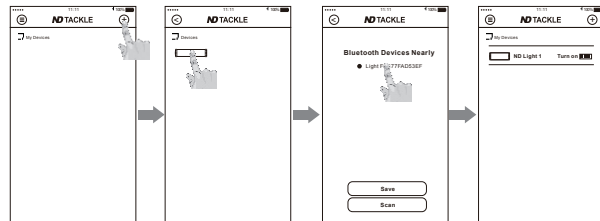
APPLE STORE



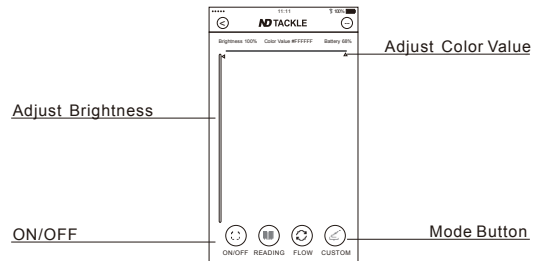
Google Play

D) Link to your Smart Phone

-Add your Bivvy Light Pro to APP



-Control the Bivvy Light Pro via APP



Notes

- Store your ND Smart light pro+ in a warm, dry place when not in use, in order to prevent condensation build up.
- It is recommended that the ND Smart Light Pro+ be cleaned with a damp cloth after use.
- After use ensure all batteries are fully charged before you pack the ND Smart Light Pro+ away for the next trip.
- If the ND Smart Light Pro+ is not going to be used for some months then recharge the batteries every 2-3 months.
- The range of the ND Smart light pro+ is dependant on weather and environmental conditions.



Environmentally friendly disposal

Old electrical appliances must not be disposed of together with the residual waste, but have to be disposed of separately.

The disposal at the communal collecting point via private persons is for free. The owner of old appliances is responsible to bring the appliances to these collecting points or to similar collection points. With this little personal effort, you contribute to recycle valuable raw materials and the treatment of toxic substances.

7 | Support

[Newdirectiontackle.co.uk/support/](https://newdirectiontackle.co.uk/support/)

We are committed to providing you with the best possible products and services, but in the unfortunate circumstance that you have a complaint or our app has a bug which needs to be fixed, please get in touch with us straight away using our support center system.

In order to streamline support requests and better serve you, we utilize a support ticket system. Every support request is assigned a unique ticket number which you can use to track the progress and responses online. For your reference we provide complete archives and history of all your support requests. A valid email address is required to submit a ticket.



Tell us what you think...

To maintain quality and product development ND has listened to the voices of its customers and identified their specific requirements and references. The company has designed and produced a range of exciting products for with our vision of becoming the most popular brand available.

UK team: info@NewDirectionTackle.co.uk
DE team: Info@NewDirectionTackle.de
NL team: Info@NewDirectionTackle.nl